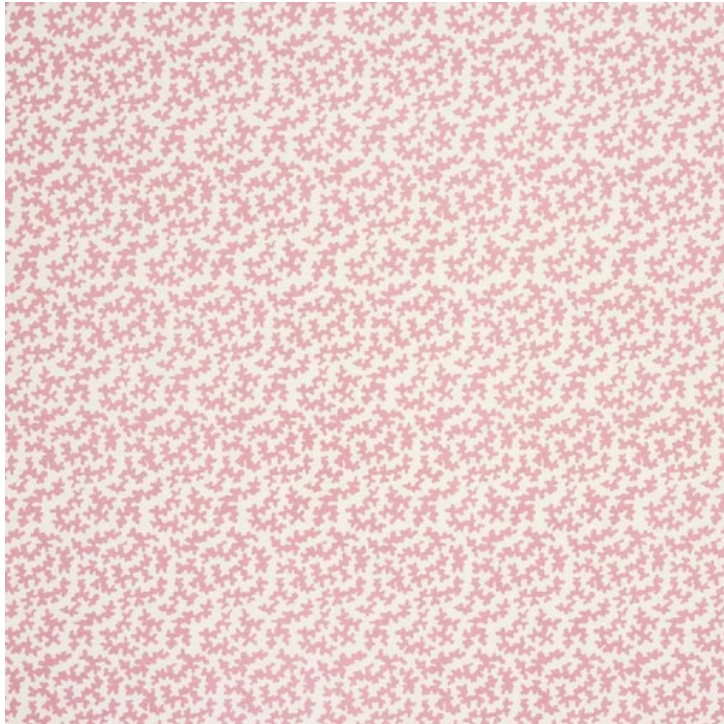


SEAWEED – FABRIC COTTON



Derived from a design found by Tom Parr on an 18th Century chair, where it was used as a lining fabric, Seaweed has been part of the collection since the 1970's.

Also available on linen in seven colourways - khaki, beige, burnt orange, citron, pale blue, teal, red.

Composition: 100% Cotton

Use: Recommended for light domestic use

Printed in the UK

Repeat:

Vertical repeat 16.5cm

Horizontal repeat 6.7cm

Printed Width:

139cm

Pricing Available on Request

SIBYL COLEFAX & JOHN FOWLER

89 – 91 PIMLICO ROAD, LONDON SW1W 8PH
TELEPHONE 020 7493 2231